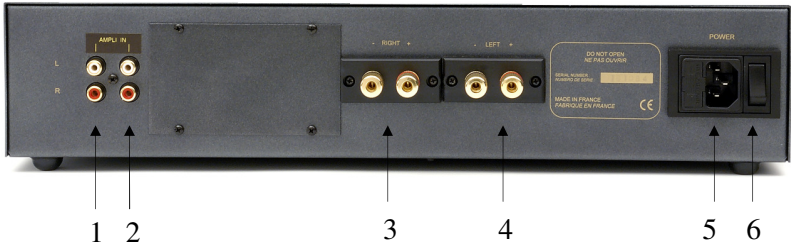


CONNECTING:



- Rear of Amplifier :**
- 1) & 2) Ampli In
 - 3) Right channel Output
 - 4) Left channel Output
 - 5) Power Plug
 - 6) Power Switch

FUNCTIONS :

Front of Amplifier :



- 7) Power indicator led

ADVISES :

- To optimise the performances your amplifier, you should switch it on at least half an hour before any listening, the time for power stage to reach their ideal working temperature. Between two utilisation, it's better to use the stand-by position, so that the power stages remains at their optimal temperatures.
- We advise you to use good wires to link with the other elements (CD player, Loudspeakers...). Don't hesitate to take advise from your dealer.
- Your Amplifier is equipped with a temporised switch on. A relay protect loudspeakers on output power stage from over-voltage.

CLEANING:

Before any cleaning, switch off your amplifier (6). Use a soft and dry rag to clean up the appliance. Never use acetone, white-spirit, ammoniac, or any kind of product containing abrasive agent. Never try to clean up inside the appliance.

TROUBLES AND SOLUTIONS :

TROUBLES	PROBABLE CAUSES
- The power led (7) do not switch on;	- The power switch (6) is on wrong position ; - The sector wire is badly plugged;
- There is no sound from one speaker;	- Check all connections between the amplifier and the speaker; - Check all connections between the amplifier and the input;

E.C. MARKING :

E.C. marking certified the conformity with low tension directive 73/23/CEE, directive CEM 89/336/CEE and national transpositions.

GUARANTEE :

The guarantee is **two years** long from date of purchase. We recommend you to ask your dealer to fill the guarantee and to conserve it. The guarantee is only available for appliance which have been use correctly.

TECHNICAL SPECIFICATIONS	POWER AMPLIFIERS		
	AM50	AM80	AM100
Efficacy power :	50 W /ch /8Ω 70 W /ch /4Ω	80 W /ch /8Ω 120 W /ch /4Ω	100 W /ch /8Ω 140 W /ch /4Ω
Impulsion power :	90 W /channel	150 W /channel	180 W /channel
Power supply :	160 VA	330 VA	660 VA
Total of capacitors :	15 000 µF	30 000 µF	30 000 µF
Number of Inputs :	2	2	2
Input impedance :	47 kΩ	47 kΩ	47 kΩ
Sensitivity :	1,25 V	1,58 V	1,77 V
Signal/Noise :	100 dBA	100 dBA	100 dBA
Distorsion at 1kHz :	< 0,05% /10W	< 0,05% /10W	< 0,05% /30W
Frequency response :	5Hz-200kHz	5Hz-200kHz	5Hz-200kHz
Rise Time :	1,5 µs	1,4 µs	1,3 µs
Dimensions :	440x90x255mm	440x90x255mm	440x90x255mm
Weight :	7 kg	8 kg	10 kg

ATOLL ELECTRONIQUE® is a French Company who conceive, manufacture and commercialise all its products.

You have just bought an amplifier with exceptional audiophile performance. We really thank you for your confidence in our products. To get the best part of your amplifier, please read carefully this manual.

CAUTIONS :

- Put your amplifier in a dry and well ventilated place, far from source of heat;
- Do not put something on your amplifier;
- Do not make any plug in when the amplifier is on;
- Avoid any short-cut;
- Respect polarity + & - and switch left & right;
- Do not plug in two speakers in parallel on the same output.

You will find enclosed :

- an amplifier ;
- one powerlead;
- this manual with the certificate of guarantee.

OWNER'S MANUAL

Amplifier

AM50 – AM80 – AM100



GUARANTEE - Amplifier

To present to your dealer with the invoice when returning back the appliance:

ATOLL ELECTRONIQUE®
Bd des Merisiers
50370 BRECEY
FRANCE

Date of purchase :

Place of purchase :

Buyer signature :

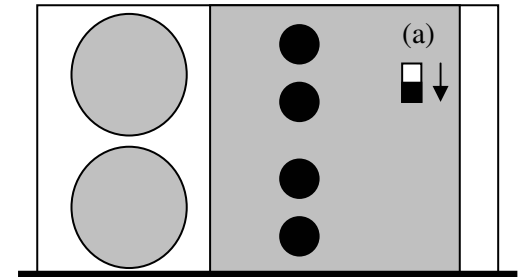
Dealer Stamp



MONO MODE

To transform your Power Amplifier from Stereo to mono, you have to push the switch (a) placed inside the appliance as shown below:

Careful : Be sure that your amplifier is unplugged and that no other appliance is plug in during this operation.



CONNECTING:

(Configuration : 1 Preamplifier et 2 mono amplifiers)

